

Long-path gas cell

The sub-ppm analysis of trace components in high purity gases can be very important for many industries, including semiconductor manufacturing. Several types of long-path gas cells are available to comply with these requirements. The materials of the cell body can be selected from glass or stainless upon user requirements. A long-path gas cell exclusively for the FT-IR full vacuum model instruments is also available.

	LPC-8M-G	LPC-12M-G	LPC-12M-S	LPC-12M-FV
				
Light pathlength:	8 m	12 m	12 m	12 m
Cell volume:	0.5 L	2.3 L	2.3 L	2.3 L
Cell body:	glass	glass	SUS316	SUS316
Inner coating:	-	-	Electropolishing	Electropolishing
Window material:	KBr (ø25 mm × 5 mm), ZnSe, CaF ₂ , BaF ₂ as option			
O-ring:	Viton (Kalrez® as option)			
Transmission efficiency:	7% *1		15% *2	
Heating:	N/A	N/A	Option	Option

*1. Using FT/IR-6000 Series, aperture 3.5 mm.

*2. Using FT/IR-6000 Series, aperture 5 mm.

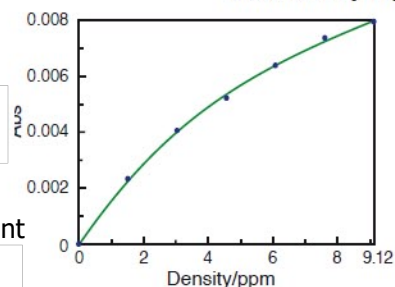
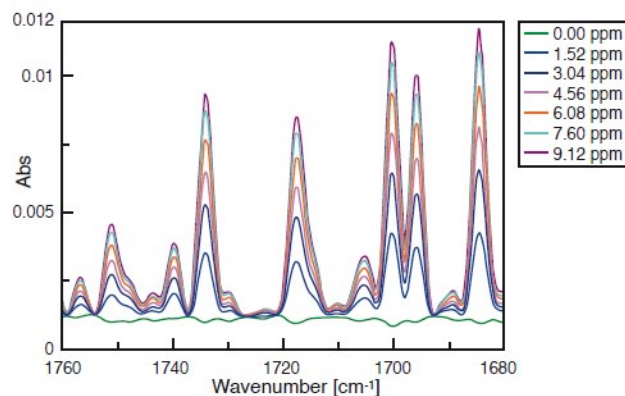
* Kalrez® is a registered trademark of DuPont Dow Elastomers.

* The LPC-12M-FV is for FT/IR-6000FV Full vacuum spectrometers.

* 8 m gas cell with SUS316 body is available as an option.



Quantitative analysis of water vapor with a 12 m gas cell and FT/IR-6000 Full Vacuum system



6909-J126B	LPC-12M-S	12m Gas cell with Stainless cell body
6909-J127B	LPC-12M-G	12m Gas cell with Glass cell body
6909-J128B	LPC-12M-FV	12m Gas cell, SUS made, heat resistant

6909-J137B	LPC-8M-G	8m Gas cell with Glass cell body
6909-J138B	LPC-8M-S	8m Gas cell with Stainless cell body
6909-J139B	LPC-8M-FV	8m Gas cell

The full vacuum gas analysis system consisting of the LPC-12M-FV long-path gas cell and the FT/IR-6000 full vacuum model enables precise quantitative analysis of trace amounts of water vapor in a semiconductor manufacturing process.



JASCO France
17 Rue des Cerisiers
91090 Lisses - France

Tél. 01 64 97 09 60 Fax: 01 85 09 90 76
email: jascofrance@jascofrance.fr