

Whelk-O[®]1

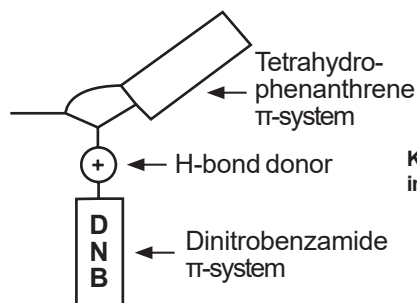
Chiral Stationary Phase

Advance Your Chiral Method Development in HPLC or SFC

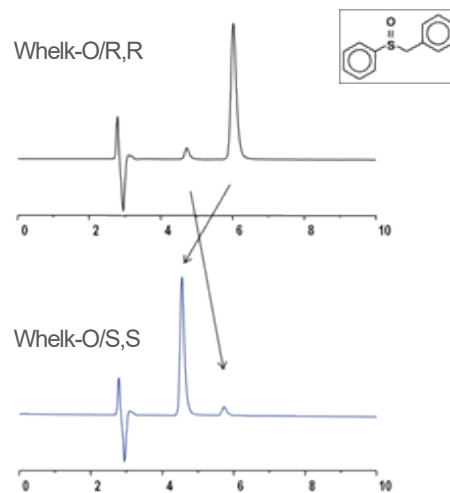
- Excellent method development column with applicability to a wide range of compound classes
- Alternate selectivity compared to polysaccharide chiral stationary phases
- High loading capacity for excellent scalability in HPLC and SFC for preparative applications
- Invert peak elution order with availability of both enantiomeric phases for difficult separations
- Diverse range of particle size choices and dimensions to fit any purpose
- Stable, long term performance for analytical and preparative applications

Chemistry

General purpose Pirkle-type chiral phase designed to achieve selectivity through pi-pi interactions, dipole moment, hydrogen bonding interactions, and additional selectivity based on structure. Fully endcapped and bonded to high purity silica. Covalent bonding makes it compatible with all commonly used mobile phases, including aqueous systems. This column can be used in both normal phase and reversed phase.



Key functional groups of the Whelk-O 1 involved in chiral recognition



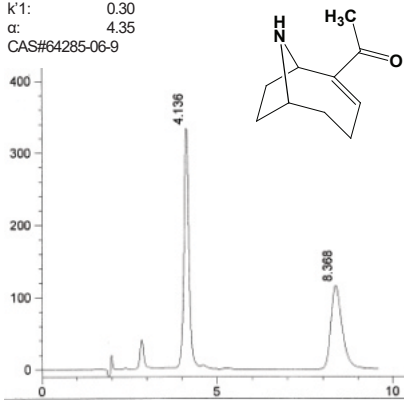
Inversion of elution order on Whelk-O S,S and R,R

Applications

- Chiral Screening
- Quality Control and Quality Assurance
- Chiral Purifications in Drug Discovery & Development
- Agricultural and Food Safety
- Animal Health

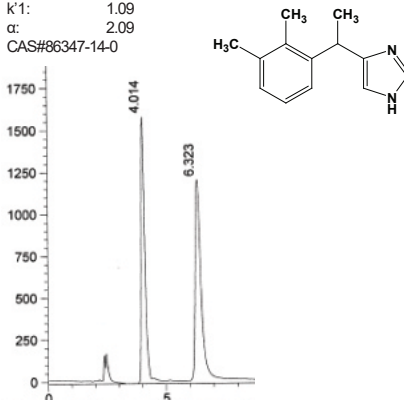
Anatoxin – A

Column: Whelk-O1- 5 μ m 25 cm x 4.6 mm
 Cat#: (S,S)-#780101
 (R,R)-#780201
 Mobile Phase: (70/30) Hexane/Ethanol + 0.1%TFA
 Flow Rate: 1.5 mL/min
 Detection: UV227 nm
 K': 0.30
 α : 4.35
 CAS#64285-06-9



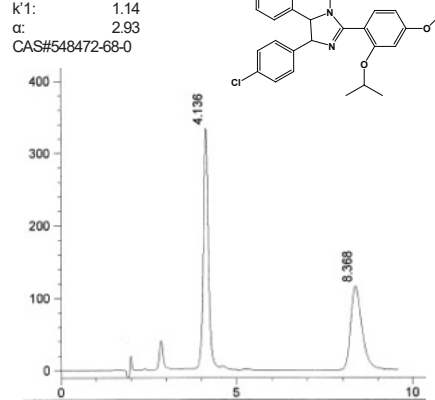
Medetomidine

Column: Whelk-O1 5 μ m 25 cm x 4.6 mm
 Cat#: (S,S)-#780101
 (R,R)-#780201
 Mobile Phase: (75/25) Hexane/IPA + 0.1%DEA
 Flow Rate: 1.5 mL/min
 Detection: UV220 nm
 K': 1.09
 α : 2.09
 CAS#86347-14-0



Nutlin-3

Column: Whelk-O1 5 μ m 25 cm x 4.6 mm
 Cat#: (S,S)-#780101
 (R,R)-#780201
 Mobile Phase: 100% Methanol
 Flow Rate: 1.5 mL/min
 Detection: UV254 nm
 K': 1.14
 α : 2.93
 CAS#548472-68-0



Product Ordering Information

Phase Type S,S	Column Length (mm)	Column ID (mm)	Particle Size (μm)	Part #
(S,S)Whelk-O1	50	2.1	3.5	1-780128-300
(S,S)Whelk-O1	50	2.1	5	1-780155-300
(S,S)Whelk-O1	100	2.1	3.5	1-780129-300
(S,S)Whelk-O1	100	2.1	5	1-780154-300
(S,S)Whelk-O1	50	4.6	3.5	1-780120-300
(S,S)Whelk-O1	50	4.6	5	1-780152-300
(S,S)Whelk-O1	100	4.6	3.5	1-780121-300
(S,S)Whelk-O1	100	4.6	5	1-780151-300
(S,S)Whelk-O1	150	4.6	5	1-780105-300
(S,S)Whelk-O1	250	4.6	5	1-780101-300
(S,S)Whelk-O1	250	21.1	5	1-780107-300
(S,S)Whelk-O1	250	21.1	10	1-786635-300
(S,S)Whelk-O1	250	50	10	1-786703-300

Phase Type R,R	Column Length (mm)	Column ID (mm)	Particle Size (μm)	Part #
(R,R)Whelk-O1	50	2.1	3.5	1-780228-300
(R,R)Whelk-O1	50	2.1	5	1-780255-300
(R,R)Whelk-O1	100	2.1	3.5	1-780229-300
(R,R)Whelk-O1	100	2.1	5	1-780254-300
(R,R)Whelk-O1	50	4.6	3.5	1-780220-300
(R,R)Whelk-O1	50	4.6	5	1-780252-300
(R,R)Whelk-O1	100	4.6	3.5	1-780221-300
(R,R)Whelk-O1	100	4.6	5	1-780251-300
(R,R)Whelk-O1	150	4.6	5	1-780205-300
(R,R)Whelk-O1	250	4.6	5	1-780201-300
(R,R)Whelk-O1	250	21.1	5	1-780207-300
(R,R)Whelk-O1	250	21.1	10	1-786335-300
(R,R)Whelk-O1	250	50	10	1-786709-300

Additional column dimensions available upon request.

Make Whelk-01 your first choice for chiral separations!

Learn more, visit: www.registech.com/whelk-01



www.RegisTech.com

JASCO FRANCE SAS
 17 rue des Cerisiers
 91090 LISSES
www.jascofrance.fr
 Tél : 01.64.97.09.60