

FRACTION COLLECTOR
Microcomputer Controlled
CHF122SC



From open column to HPLC liquid chromatography and general liquid samplings, the Super Fraction Collector, model CHF122SC has a wide range of uses.

The CHF122SC is a fraction collector with increased reliability, employs an X-Y movement mechanism based on long years of technological accumulation, a new vertical movement apparatus and a large display screen for easier use than ever. The CHF122SC holds up to 120 vessels, and can handle a variety of vessel diameters and lengths. With its numerous fraction functions, the CHF122SC boasts a wide range of applications.

■ Features

- **Easier operation with a large display screen**

With 9 operation keys and a large 40 characters x 8 row display screen, it is easier than ever to input programming and parameter settings. The graph display of chromatography signals makes it easy to determine the status of fraction collection.

- **Reliable construction**

The water-sensitive operation panel as well as the mechanical and electronic parts are placed behind the test tube rack to protect against water droplets for a practical, long-lasting design.

- **Supports different sized collection vessels**

The vertical dial allows 70 mm of movement to adjust the dropper nozzle position to the test tube length (105 ~ 180mm). The standard test tube rack will hold 120 tubes with a diameter of 12 ~ 15mm (maximum of 18.1 mm with the standard rack holder removed). Large volume vessels can be set when the rack lid is removed.

- **Quick nozzle movement with higher resolution**

A sturdy frame and higher resolution stepping motor are used. The nozzle moves accurately to the set position, from tube to tube in 0.1 seconds.

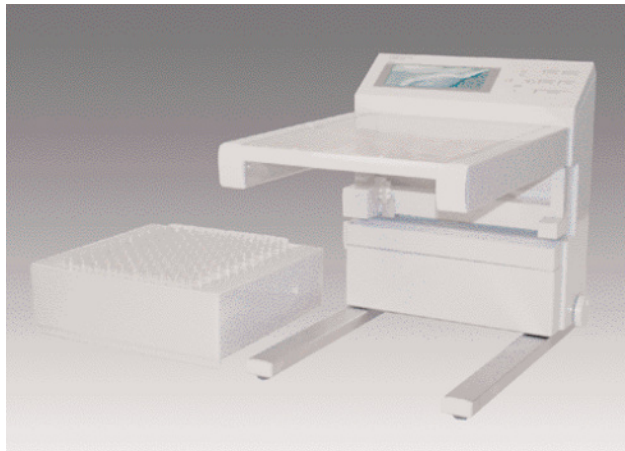
- **Unneeded constituents drained**

Waste constituents are drained out so test tubes are not unnecessarily contaminated.

- **Safe, chemically resistant material**

The exterior of the unit is made of flame retardant ABS plastic, and the test tube rack and drain are made of chemically resistant polypropylene.

Main body and standard rack



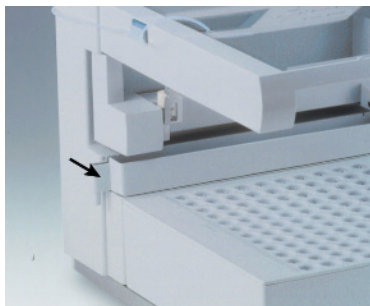
For collecting big bottles



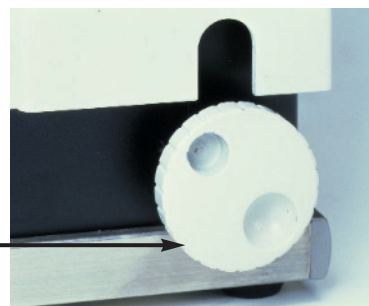
Simple up-and-down movement



Drain



Up/Down knob

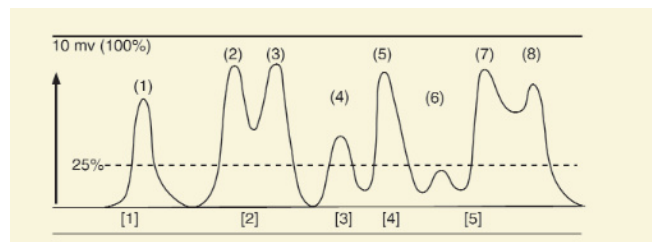


- Loaded with Unique Collection Functions

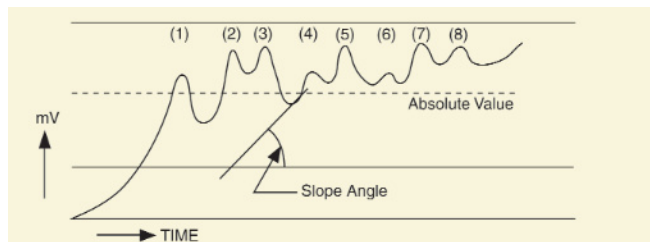
- **Simple mode:** Collect by time, drops, volume or signal.

- **Peak Mode:** Specify up to a maximum of 10 peaks for identification. Peak determination may be made using a combination of absolute value and slope angle.

Example of peak absolute value setting Set the percent value using an input signal full scale of 100%. Peaks above the set absolute value are identified.



Example of slope angle setting As shown in the graph at right, because of base line drift, only three peaks are identified at 1, 2/3 and 4/5/6/7/8 by absolute values setting. However, by using a slope setting, all 8 peaks are identified.



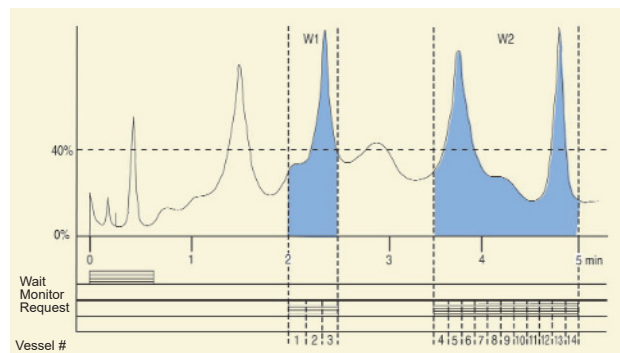
- **Window mode**

A maximum of 16 windows (time ranges) may be set so that peaks are identified and fraction collection occurs only within each window. By setting the monitor time, non-peaks may also be collected in the test tubes.

Window mode setting, example 1

Window 1 is set between 2min00sec and 2min32sec at request time of 12sec. Window 2 is set between 3min32sec and 5min00sec at 8 sec request time.

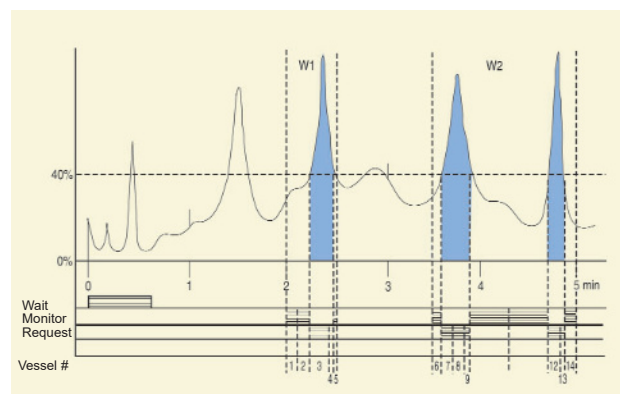
| | |
|------------------------|--|
| <u>Main settings</u> | Wait time: [40 sec] |
| | Non-window monitor time: [0 sec] |
| <u>Window settings</u> | 01: Start [2min00sec] ~ End [2min32sec] |
| | Request time [12 sec] |
| | 02: Start [3min32sec] ~ End [5min00sec] |
| | Request time [8 sec] |
| <u>Peak parameters</u> | Absolute value: [0%], Slope angle: [0mv/min] |
| | Response: [*HIGH], Delay time: [0 sec] |



Window mode setting, example 2 (peak identification)

Peaks within the windows are identified. Fraction collection is set at 12 seconds during peaks for window 1. For non-peaks, the monitor time interval is 8 seconds.

| | |
|------------------------|---|
| <u>Main settings</u> | Wait time: [40 sec] |
| | Non-window monitor time: [0 sec] |
| <u>Window settings</u> | 01: Start [2min00sec] ~ End [2min32sec] |
| | Request time [12 sec] |
| | Monitor [08 sec] |
| | 02: Start [3min32sec] ~ End [5min00sec] |
| | Request time [8 sec] |
| | Monitor [24 sec] |
| <u>Peak parameters</u> | Absolute value: [40%] |
| | Slope angle: [20 mV/min] |
| | Response: [*HIGH] |
| | Delay time: [0 sec] |



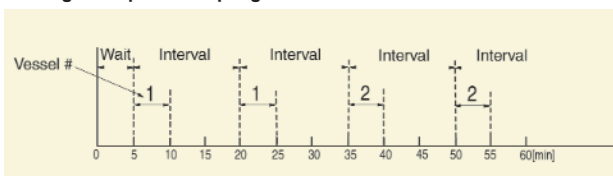
- **Manual mode**

Collect fractions while watching the chromatography signals displayed on the screen. A fraction may be reviewed under playback mode.

- **Sampling mode**

Collect fractions for a set interval during a set period. Multiple collections may be set per test tube. In the setting example shown on the right, wait time is 5 minutes, each test tube has 2 repeats of 5 minutes intervals every 15 minutes.

Setting Example = Sampling Mode



- **Multiple sample functions**

After a fraction collection has completed, the next fraction sampling begins at the next test tube or after skipping one tube.

- **Synchronize the chromatogram and collection using the time delay function**

Because of the distance from the UV absorption detector, refractometer or other instruments to the fraction collector dispense nozzle, there is a delay from the point of graphing until the sample is collected in the tube. By inputting the lag time, the collected sample can be set to accurately conform to the record (chromatogram).

- **Verify the fraction collection results by looking at the graph**

The results of up to 500 events can be displayed. Chromatography signals are displayed in peak, window and manual modes.

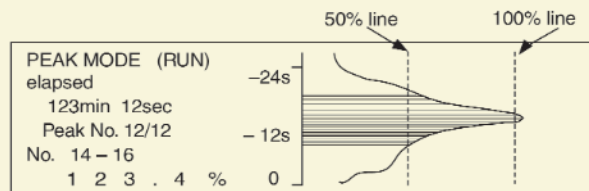
- **Operate using a computer**

Using a computer, the parameter settings for each mode as well as starting, ending, pausing and advancing can be controlled. By loading up to 500 fraction results into the computer, the operation history of the equipment and test results can be easily verified.

Fraction result display

| DISPLAY RESULT (TIME MODE) | | | | |
|----------------------------|-------|--------|----------|----------|
| V. NO. | EVENT | TRIG. | START T. | LAP TIME |
| 0 | START | KEY | 0 | 0m 30s |
| 1 | TIME | | 0m 30s | 0m 20s |
| 2 | TIME | | 0m 50s | 0m 20s |
| 3 | TIME | V. NO. | 1m 10s | 0m 20s |
| 4 | TIME | | 1m 30s | 0m 20s |

Peak signal graph display

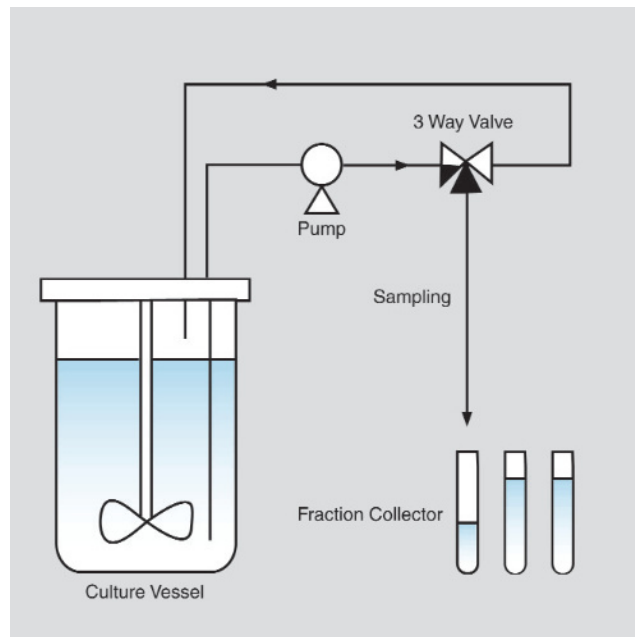
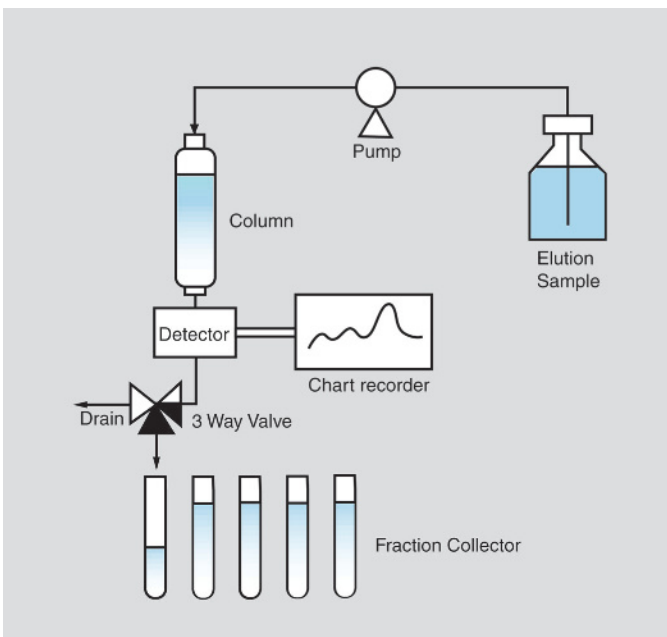


Sample liquid chromatography system set-up

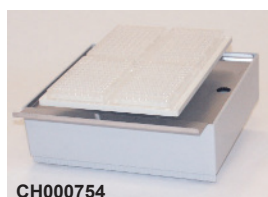
After inserting the sample into the top of the column, the elute separates out. While characteristics are measured with detectors, the separated substances are eluted into the fraction collectors.

Example of sampling system set-up

A small amount is sampled at a fixed interval, and inserted into the fraction collectors.



CHF122SC Accessories



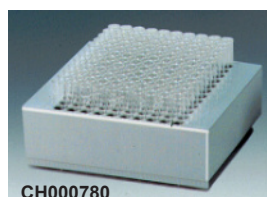
CH000754



CH000760



CH000770



CH000780



CH000790

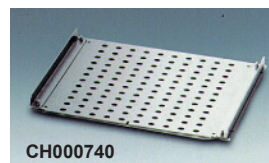
■ Optional racks and rack accessories Non -standardtesttube racksavailable.

| Product | Model | Vessels | Holding qty |
|---|----------|--|-------------|
| 96 well microplate Rack | CH000754 | 96 well microplate | 4 |
| 27.5 mm vial Rack | CH000760 | 27.5 mm (OD) X 57 mm scintillation vials | 56 |
| 16.5 mm vial Rack | CH000770 | 16.5 mm (OD) x 54 mm scintillation vials | 120 |
| Testtube Rack (without holder) for 155 mm OD and up test tube | CH000780 | 15 – 18.1 mm (OD) x 105 – 18 mm (L) test tubes | 120 |
| Testtube Rack (with 12 mm OD holder) for 12 mm OD test tube | CH000790 | 12 mm (OD) x 105 – 180 mm (L) test tubes | 120 |

* Microplates, scintillation vials and test tubes are not included with racks.



CH000730



CH000740

| Product | Model | Specifications |
|-------------------|----------|--|
| 12 mm holder | CH000730 | Test Tube rack (12 mm OD holder), holds 30 12-mm test tubes |
| Rack middle plate | CH000740 | Place in the test tube rack (standard, 15 mm OD or larger, or 12 mm OD) to allow use of 35~105 (L) mm tubes. |

■ Eppendorf tube adapter

Use to adapt the standard test tube rack to Eppendorf tubes

| | |
|-----------------------|--|
| Model | CH000800 |
| Max. no. of fractions | 120 |
| Useable test tubes | 1.5 mL (40 mm high, 11 mm body circumference) |
| Material | Stainless steel |
| Dimensions | 275 (w) x 248 (d) x 115 (h) mm |



CH000800

* Testtube rack and Eppendorf tubes are not included with the Eppendorf tube adapter.

■ Preparative Options

Prep. Funnel(CH000160) and Prep. Funnel Rack(CH000845) allow the end user to collect fractions in large volume containers.



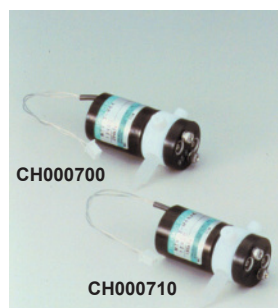
CH000160

| Product | Model | Specifications |
|--------------------|------------|--------------------------------------|
| Prep. Funnel | CH000160 | 30 fraction funnels in each CH000160 |
| Prep. Funnel Rack | CH000845 | Holds up to 3 CH000160s (3x30 pos.) |
| Prep. Tygon Tubing | CH000180US | TYGON TUBE(6.35X9.52mm) X 5M) |
| Prep. Mobile Cart | CH000115 | Cut out hole on the Top table |



■ 3-Way diverter valve

Prevent the sample from spillage out from the tubes while the nozzle is in transit. Also, use the included seal adapter to use the valve as a stop valve. May be set to drain to prevent residual sample in the valve from the previous peak from being mixed in with the next fraction. The 3-way valve CH000710 has a low residual volume to decrease contamination.



CH000700

CH000710

| | | | |
|----------------------|----|------------------------|--------------------------|
| Product | | 3-Way diverter valve | Low residual 3-Way valve |
| Model | | CH000700 | CH000710 |
| Inlet pressure | | 300 kPa (40.5psi) | 200 kPa (29psi) |
| Connector Material | | Teflon, Diflon (PCTFE) | |
| Residual volume (μL) | IN | 26 | 14 |
| | NC | 66 | 7 |
| | NO | 66 | 7 |
| Power consumption | | 2.2 VA max. | |

* The CH000710 has a flow volume approximately 40% less than the CH000700.

■ Specifications

■ Model CHF122SC

Testtube quantity 120 tubes (12 ~ 18 mm OD x 105 ~ 180 mm L)
(remove tube holders for larger than 15 mm OD)

Operation modes Simple, Peak, Window, Manual, Sampling

Collection methods By Time, Drop count, Drop volume, Signal

Nozzle shift time 0.1 sec (tube center to center)

■ Modes of Operation

Simple mode Time: 99 min 59 sec/ tube max.
Drop: 9999 count/ tube max.
Volume: 999.9 mL/ tube max.
Signal: 9999 count/ tube max.

Peak mode:
End time: 999 min max.
Requesttime: 99 min 59 sec/ tube max.
Monitor time: 99 min 59 sec/ tube max.
Fraction peak: Up to 10 out of 99 peaks
Peak discrimination: Absolute value 100% max.
Slope 99.99mV/min or 9.999mV/min max.

Signal response: Chromoto. signal sampling
High: 0.5 sec Low: 3 sec

Window mode Non-window monitor: 99 min 59 sec max.
No. of windows: 16 max.
Start/end time: 999 min 59 sec max.
Request/Monitor time: 99 min 59 sec/ tube max.
Peak specifications: Same as in peak mode

Manual mode Learning response: Chromoto. signal display
High: 0.5 sec Low: 3 sec.
Playback: Replay results of learning

Sampling mode Interval: 99 min 59 sec max.
Collection time: 99 min 59 sec max.
Collection volume: 999.9 mL max.
No. of repeats: 99 max.

Common parameters Wait time: 999 min 0 sec max.
for Simple, Peak, Window and Sampling modes

Delay time: 9 min 59 sec max.
for Peak, Window and Manual modes

Multi-sample: Possible in Simple, Peak and Window modes.

■ Equipment parameter specifications

Volume collection Collection time (min) =
Flow volume (mL)/ flow rate (mL/min)

Multi-sample Skip one vessel or continuous (Non-skip)

Marker (2) ON after operation (assembled with I/O extension
unit, pumps stop after operation) or OFF

Power failure Display On or Off

RS-2323C Baud rates 1200, 2400, 4800
Characters: 8-bit, Parity: None, Stop: 2-bit

■ Vessel parameter specifications

Rack selection Standard test tube Rack (CH000670)
Eppendorf tube Rack (CH000800)
Scintillation vial (16.5mm) Rack (CH000770)
Scintillation vial (27.5mm) Rack (CH000760)
Microtiter plate (96well x4) Rack (CH000754)
Prep. Funnel (CH000160) Rack (CH000845)

■ Bottle position arrangement

Bottle arrangement Matrix arrangement: 2 patterns
Arbitrary arrangement: 1 pattern

Regular arrangement Max. 12 rows x 15 columns (120 pos. max.)

Arbitrary arrangement Max. 100 positions

■ External signals

Event marker 2 contact point output circuits:
1. Pulsesignals
2. Levelsignals

Chromato, signal input 10 mV or 1 V full scale

External start input ON START

External end input ON END

External count input ON COUNT

Serial interface RS-232C (9-pin connector)

■ Accessories

Testtube rack CH000670 (1)
Drain (1)
Dust cover (1)
I/O terminal connector (1)
Sample tubing:
Teflon 2 mm OD x 1 mm ID x 1 M (1)
Drain tubing:
Silicon 8 mm OD x 5 mm ID x 0.5 M (1)
Tube Suspender (2)
Power cord (1)
Installation & Operation Manual (1)

■ General electrical specifications

Clock Quartz oscillation

Operation Display 40 characters x 8 rows (LCDw/backlight)

Parameter memory Battery back-up

Temperature range 2 ~ 40°C (35 ~ 104°F)

Power AC 100 V, 115 V, 240 V, 0.23 A max.

External dimensions 286 (w) x 387 (d) x 335 (h) mm

Weight Approx. 7 kg (15.4 lbs)

■ Replacement items

| Product | Model | Material/specs |
|------------------------|----------|-------------------------------|
| Test Tube rack | CH000670 | Polypropylene |
| Drain | CH000680 | Polypropylene |
| Dust Cover | CH000691 | PVC |
| Tube Support (12~15mm) | CH000720 | for CH000670, (30 holders/pk) |



JASCO France
17 rue des Cerisiers
91090 LISSES

Site web : jascofrance.fr
Mail : jascofrance@jascofrance.fr
Tél : 01.64.97.09.60